

PART OF N.E. 1/4 OF
SECTION 17, T. 6 N., R. 1 W., S. L. B. & M.

63

TAXING UNIT: 25

IN OGDEN CITY

PREFIX: 12-063

SCALE 1" = 50'

SEE PAGE 58

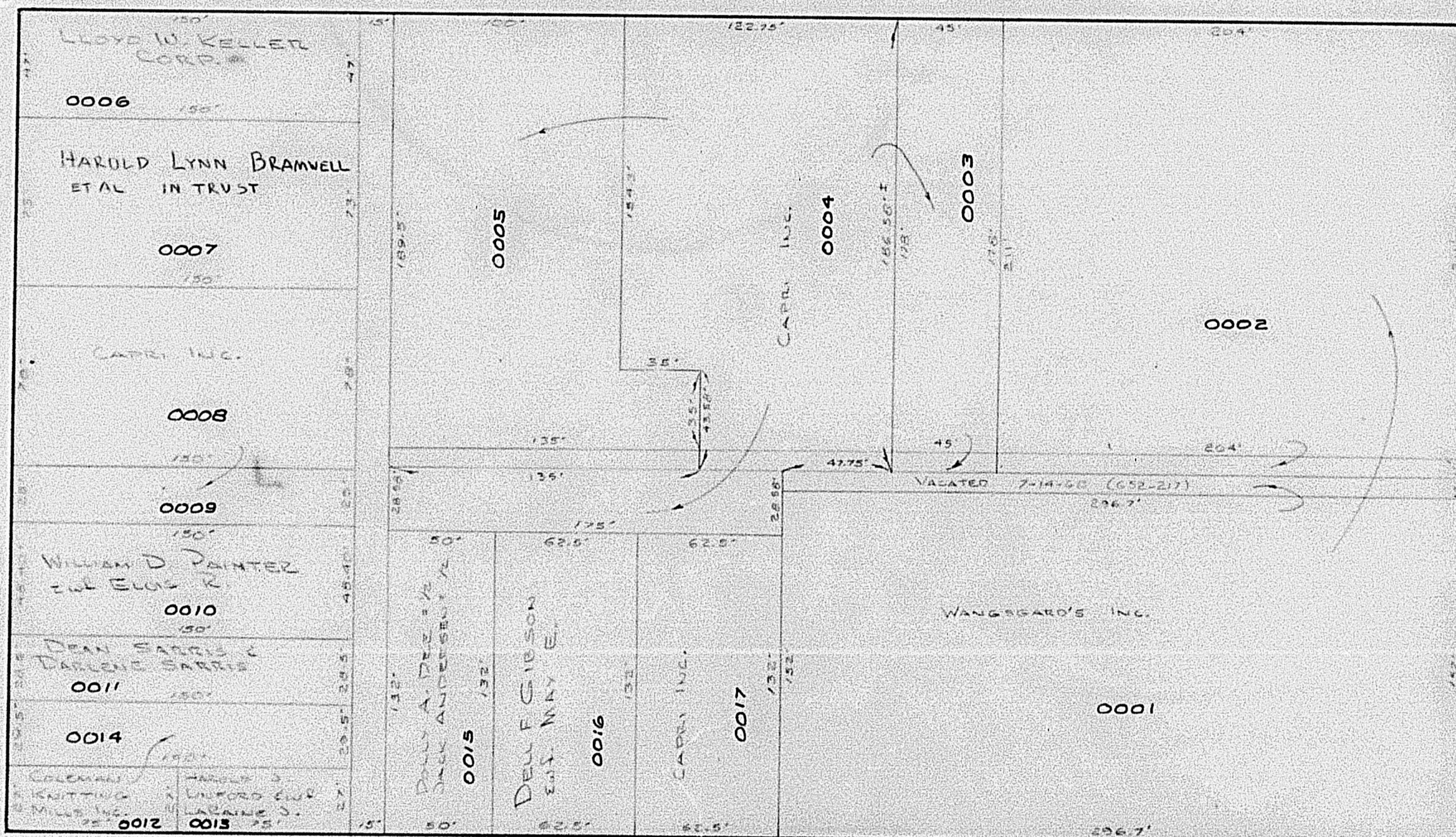
1/4 OF 1/4 SEC. LINE

2ND.

STREET

N. 89° 09' 45" W.

WASHINGTON
BLVD.



ADAMS
AVENUE

SEC. LINE = N. 0° 58' 40" E.
E. N. 0° 58' E.

SEE PAGE 64

N. 0° 50' 15" E.

WASHINGTON
BLVD.

OGDEN CITY 0018

N. 89° 09' 45" W.

3RD.

STREET

SEE PAGE 66

OGDEN
N. 0° 58' E.

AVE

SEE PAGE 65